

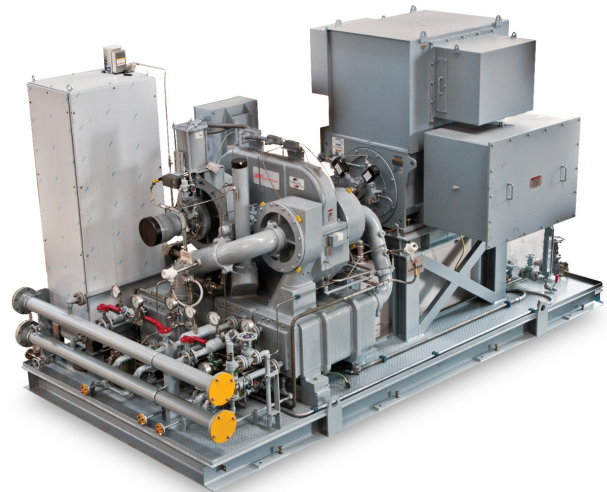


## MSG<sup>®</sup> TURBO-AIR<sup>®</sup> API Centrifugal Air Compressors

We have a long-standing tradition of providing innovative products and technology that positively affect our customers bottom line. Following in this tradition, the API 672 custom MSG TURBO-AIR API range has been developed through close interaction with our customer base and analysis of their individual application demands.

### Features

**American Petroleum Institute (API)  
Standards Compliance:**



## Model Specifications

Specification	Metric	Imperial
Standard Input Power	93 to 2237 kW	125 to 3000 hp
Discharge Pressure	3.5 to 14.5 barg	50 to 210 psig
Inlet Flow	14.3 to 430 m <sup>3</sup> /min	505 to 15,200 CFM

## Parts & Accessories



**Piezas de repuesto de los  
compresores centrífugos de aire  
TURBO-AIR**



**Field Overhaul Services**



Ingersoll Rand (NYSE:IR) advances the quality of life by creating comfortable, sustainable and efficient environments. Our people and our family of brands—including Club Car®, Ingersoll Rand®, Thermo King® and Trane®—work together to enhance the quality and comfort of air in homes and buildings; transport and protect food and perishables; and increase industrial productivity and efficiency. We are a \$14 billion global business committed to a world of sustainable progress and enduring results. For more information, visit [www.ingersollrand.com](http://www.ingersollrand.com).